

STATE OF FLORIDA
COUNTY OF PALM BEACH
THIS PLAT WAS FILED FOR
RECORD AT _____ M.
THIS _____ DAY OF _____
A.D. 2004 AND DULY RECORDED
IN PLAT BOOK _____ ON
PAGES _____ AND _____
DOROTHY H. WILKEN
CLERK CIRCUIT COURT
BY: _____
DEPUTY CLERK

THIS INSTRUMENT PREPARED BY
DAVID P. LINDLEY
OF
CAULFIELD and WHEELER, INC.
SURVEYORS - ENGINEERS - PLANNERS
7301-A WEST PALMETTO PARK ROAD, SUITE 100A
BOCA RATON, FLORIDA 33433 - (561)392-1991
AUGUST - 2003

WELLINGTON VIEW

A PLANNED UNIT DEVELOPMENT, BEING A REPLAT OF A PORTION OF BLOCK 11, PALM BEACH FARMS COMPANY PLAT NO. 3,
AS RECORDED IN PLAT BOOK 2, PAGES 45 THROUGH 54, OF THE PUBLIC RECORDS OF PALM BEACH COUNTY, FLORIDA,
LYING IN SECTIONS 5, 6, 7 AND 8 TOWNSHIP 44 SOUTH, RANGE 42 EAST, PALM BEACH COUNTY, FLORIDA

MATCH LINE
SHEET 6 OF 8

MATCH LINE
SHEET 6 OF 8

NOTES COORDINATES, BEARINGS AND DISTANCES

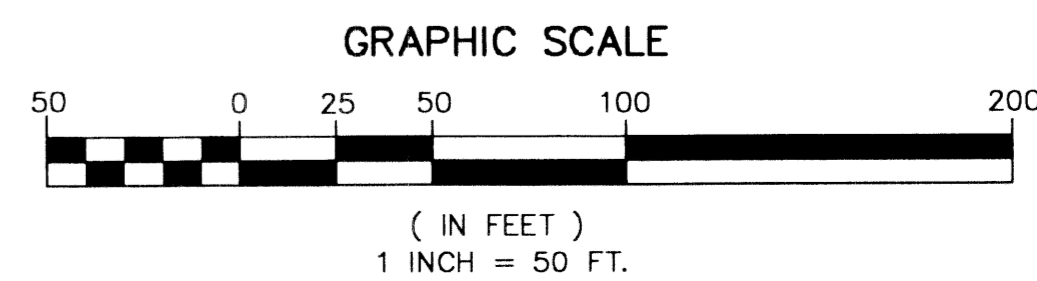
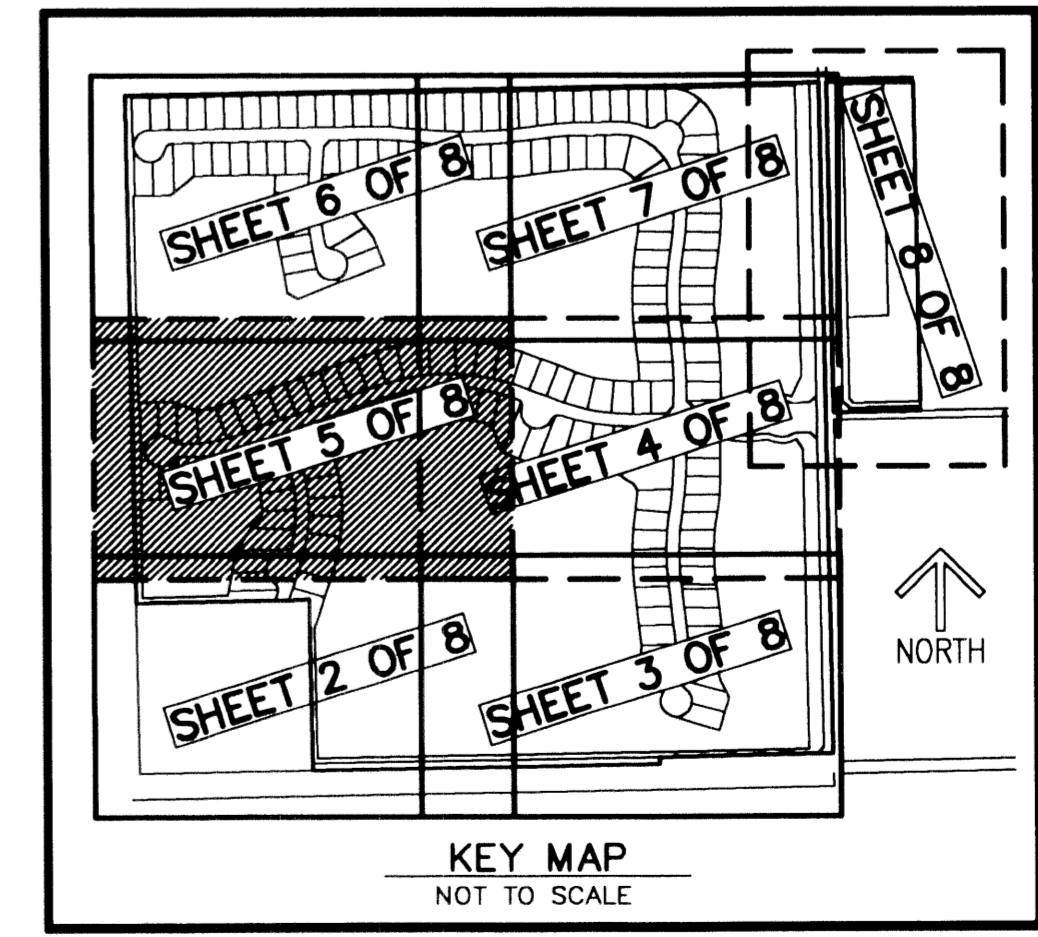
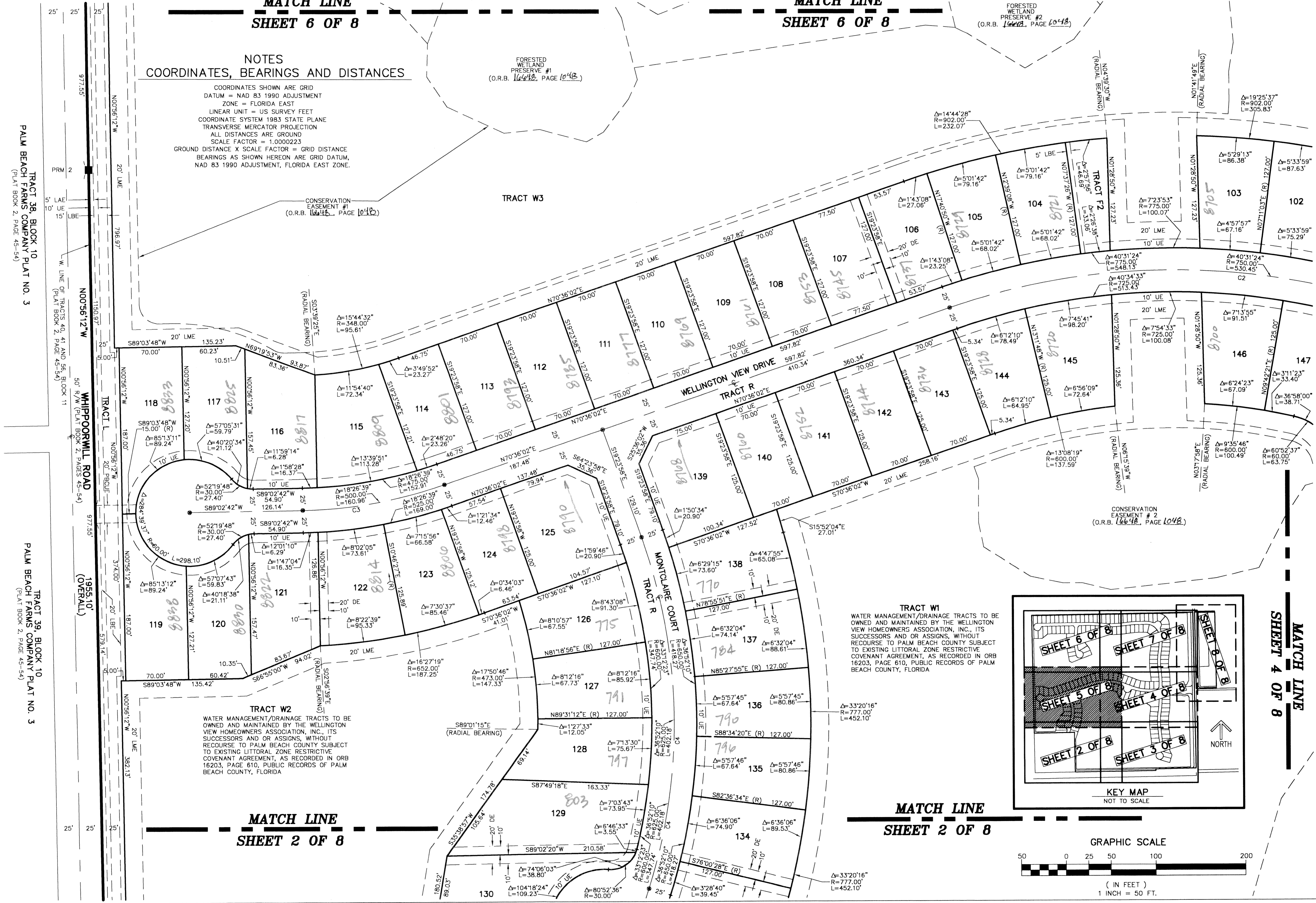
COORDINATES SHOWN ARE GRID
DATUM = NAD 83 1990 ADJUSTMENT
ZONE = FLORIDA EAST
LINEAR UNIT = US SURVEY FEET
COORDINATE SYSTEM 1983 STATE PLANE
TRANSVERSE MERCATOR PROJECTION
ALL DISTANCES ARE GROUND
SCALE FACTOR = 1.0000223
GROUND DISTANCE X SCALE FACTOR = GRID DISTANCE
BEARINGS AS SHOWN HEREON ARE GRID DATUM,
NAD 83 1990 ADJUSTMENT, FLORIDA EAST ZONE.

FORESTED
WETLAND
PRESERVE #1
(O.R.B. 16648, PAGE 1048)

CONSERVATION
EASEMENT #1
(O.R.B. 16648, PAGE 1048)

FORESTED
WETLAND
PRESERVE #2
(O.R.B. 16648, PAGE 1048)

CONSERVATION
EASEMENT #2
(O.R.B. 16648, PAGE 1048)



MATCH LINE
SHEET 2 OF 8

MATCH LINE
SHEET 4 OF 8

MATCH LINE
SHEET 2 OF 8

TRACT W2
WATER MANAGEMENT/DRAINAGE TRACTS TO BE OWNED AND MAINTAINED BY THE WELLINGTON VIEW HOMEOWNERS ASSOCIATION, INC., ITS SUCCESSORS AND OR ASSIGNS, WITHOUT RECOURSE TO PALM BEACH COUNTY SUBJECT TO EXISTING LITTORAL ZONE RESTRICTIVE COVENANT AGREEMENT, AS RECORDED IN ORB 16203, PAGE 610, PUBLIC RECORDS OF PALM BEACH COUNTY, FLORIDA

TRACT W1
WATER MANAGEMENT/DRAINAGE TRACTS TO BE OWNED AND MAINTAINED BY THE WELLINGTON VIEW HOMEOWNERS ASSOCIATION, INC., ITS SUCCESSORS AND OR ASSIGNS, WITHOUT RECOURSE TO PALM BEACH COUNTY SUBJECT TO EXISTING LITTORAL ZONE RESTRICTIVE COVENANT AGREEMENT, AS RECORDED IN ORB 16203, PAGE 610, PUBLIC RECORDS OF PALM BEACH COUNTY, FLORIDA

TRACT W3

TRACT R

TRACT R

TRACT 38, BLOCK 10
PALM BEACH FARMS COMPANY PLAT NO. 3
(PLAT BOOK 2, PAGE 45-54)

TRACT 39, BLOCK 10
PALM BEACH FARMS COMPANY PLAT NO. 3
(PLAT BOOK 2, PAGE 45-54)

SEE RECORDS WELLINGTON VIEW
TRACT 44
BLOCK 10
PLAT BOOK 2
PAGE 160 A
TRACT 47
BLOCK 10
PLAT BOOK 2
PAGE 324 II
PAGE 753
1-2003 PLAT